



KJM 5280, KJM 5250 and KJM 9250

NMR processing everywhere
with VMware Horizon Client
and TopSpin 3.6.2

Version 2.0

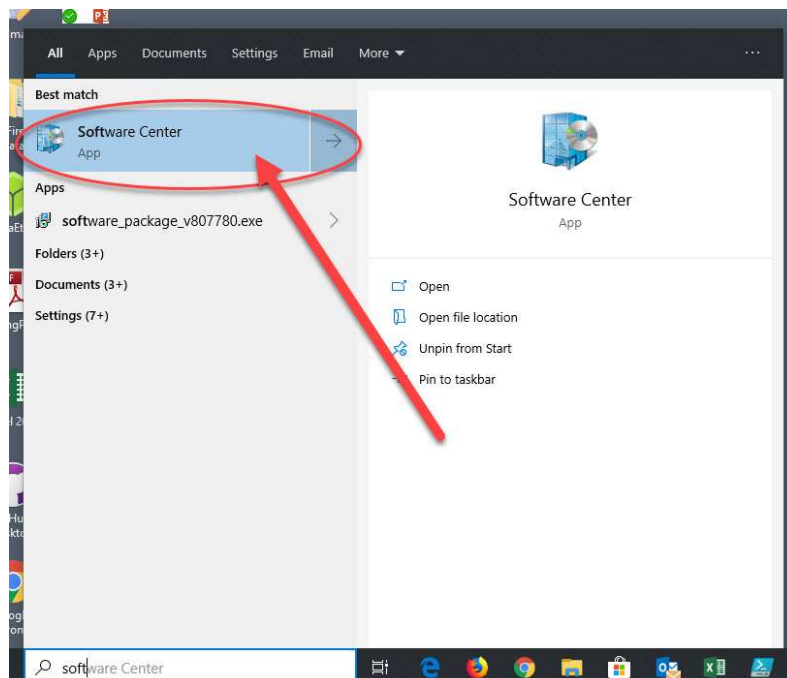
© Morten Berntsen and Frode Rise, January 2022

You must install VMware on your Pc or Macintosh. If you use a UiO-managed PC do as follows:

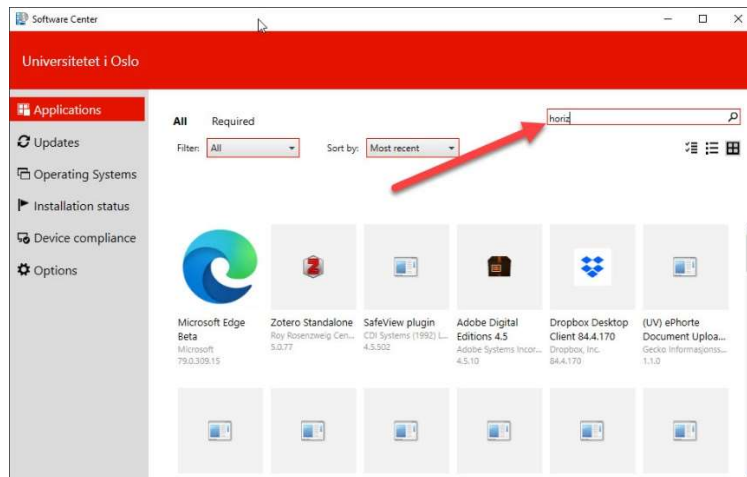
Start by clicking on the Windows-symbol in the bottom left corner or by hitting the windows-key on your keyboard.



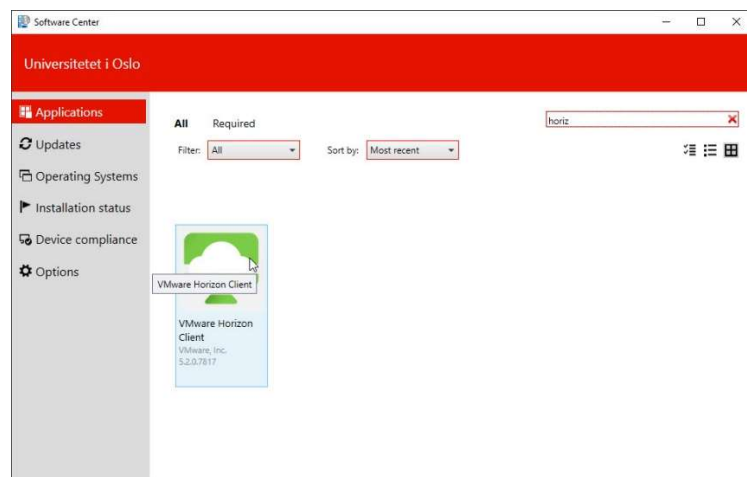
Then immediately start typing Softwa... in the writable window (not shown here). The application Software Center shows up as a suggestion. Click on it.



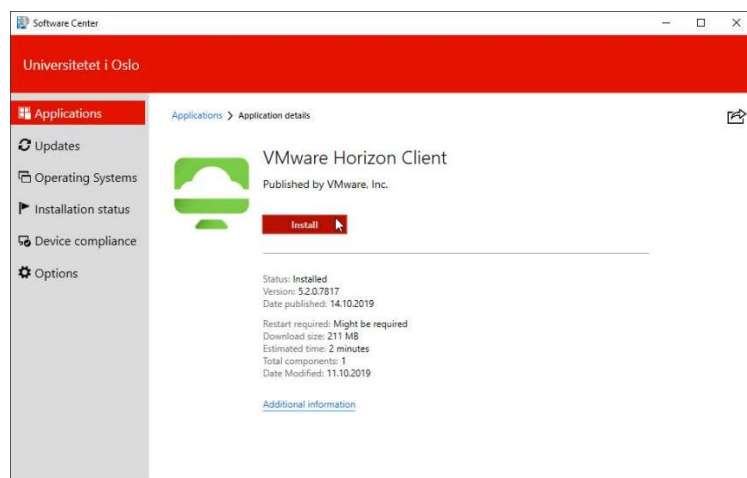
In the search field type in horiz as shown, then hit the Enter-key.



VMware Horizon Client shows up. Click on it.



Click on Install



Installing VMware Horizon Client on a non UiO computer:

Go to:

https://customerconnect.vmware.com/en/downloads/info/slug/desktop_end_user_computing/vmware_horizon_clients/horizon_8

vmware CUSTOMER CONNECT

Home / VMware Horizon Clients

Download VMware Horizon Clients

Select Version:

HORIZON 8 ▾

VMware Horizon Clients for Windows, Mac, iOS, Linux, Chrome and Android allow you to connect to your VMware Horizon virtual desktop from your device of choice giving you on-the-go access from any location.

[Read More](#)

Product Resources

- [View My Download History](#)
- [Product Info](#)
- [Documentation](#)
- [Horizon Mobile Client](#)
- [Privacy](#)
- [Horizon Community](#)

Product Downloads Drivers & Tools Open Source Custom ISOs OEM Addons

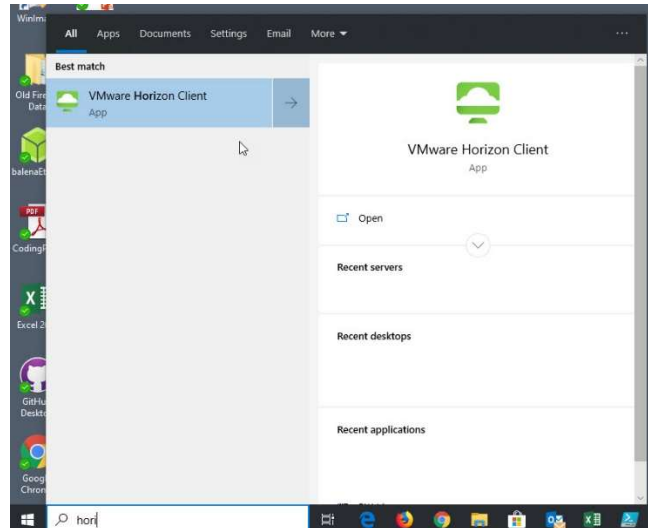
Product	Release Date	
VMware Horizon Client for Windows	2021-11-29	GO TO DOWNLOAD
VMware Horizon Client for Mac	2021-11-29	GO TO DOWNLOAD
VMware Horizon Client for Linux		
VMware Horizon Client for 32-bit Linux	2021-01-07	GO TO DOWNLOAD
VMware Horizon Client for 64-bit Linux	2021-11-29	GO TO DOWNLOAD
VMware Horizon Client for Linux tarball version	2021-11-29	GO TO DOWNLOAD

Download and install the upper selection for Windows or the Mac version, the Linux version, the iOS (iPhone and iPad) or the correct Android version.

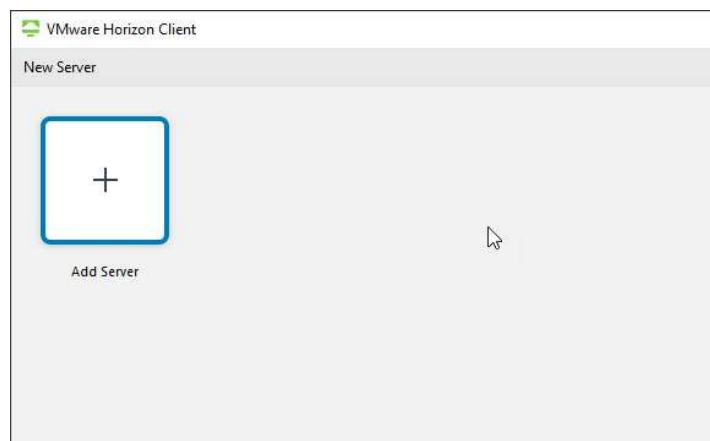
Starting the VMware Horizon Client:

Start by clicking on Windows-symbol in the bottom left corner or by hitting the windows-key on your keyboard on your PC and then immediately start typing "hori"

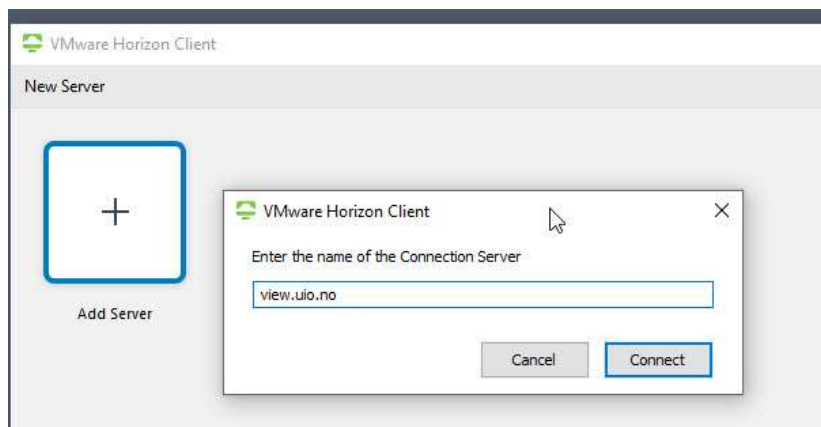
Alternatively click on the green VMware symbol located somewhere on your desktop. Click on «VMware Horizon Client», and the application starts up.



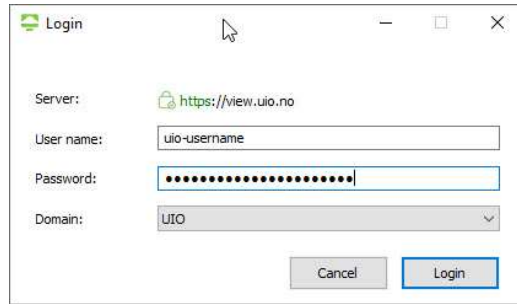
When this is the first time you are using the program, it needs to be configured so it will know where to find it's stuff. Start by double-clicking on "Add Server".



Fill in «view.uio.no». Do not type « and » use only view.uio.no



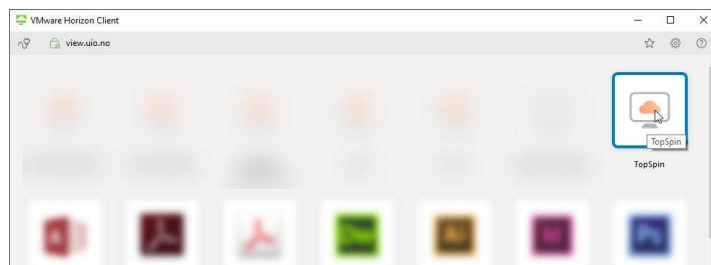
Type in your uio-username and password. Click "Login" Do not type uio- in front of your username.



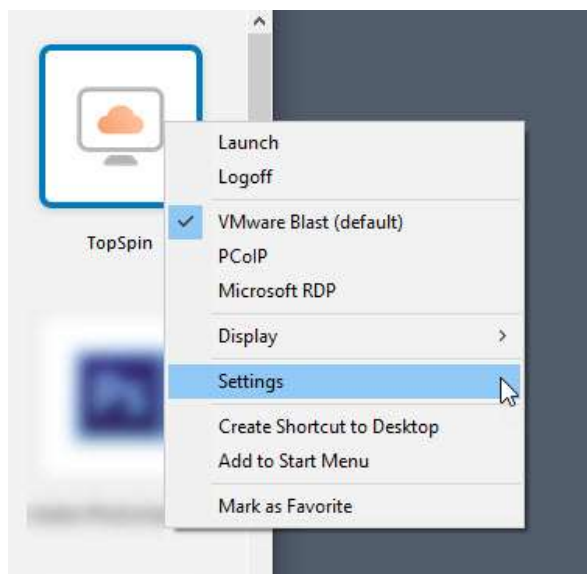
Click Yes or No. Frode says Yes and Morten says No.



Then the following window pops up. Click on TopSpin in order to start the remote-session for TopSpin.

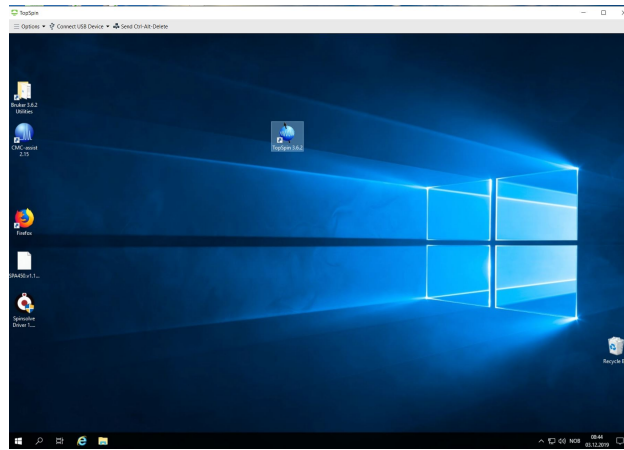


If you are using multiple monitors this connection will by default grab all monitors (at least Morten's does). If this is an unwanted behavior, you can do the following. Right-click the symbol for the TopSpin server and select settings.

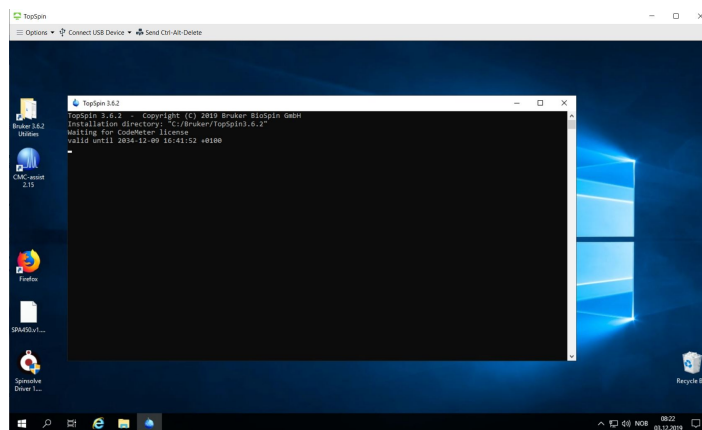


Either a new desktop on top of your regular desktop or a window on your desktop. Double click on the TopSpin icon and sit back and wait.....

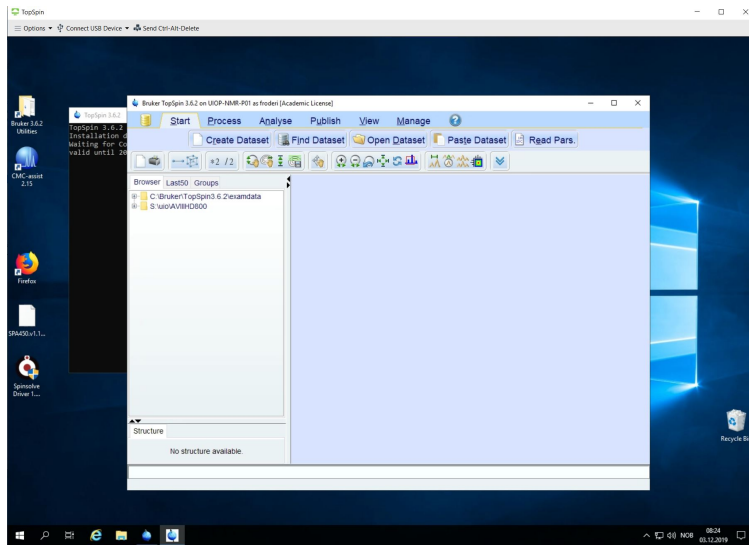
Here is a picture showing what it looks like after starting the VMware program (not in a browser) It might be troublesome to get back to your own desktop. How to do this is explained later. Double click on the TopSpin 3.6.2 icon and wait a little less compared to above.



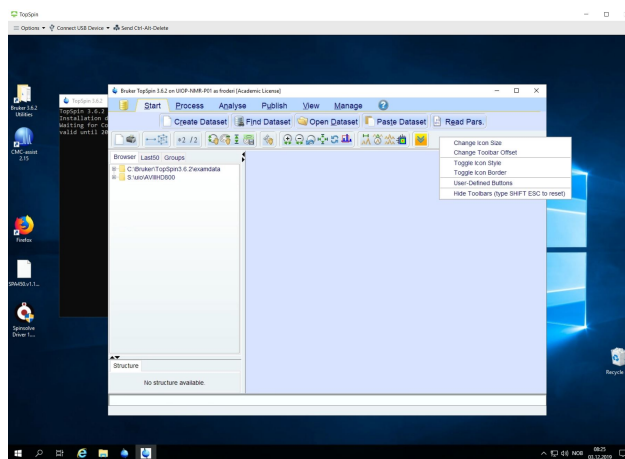
Wait a minute or three for the program to start.



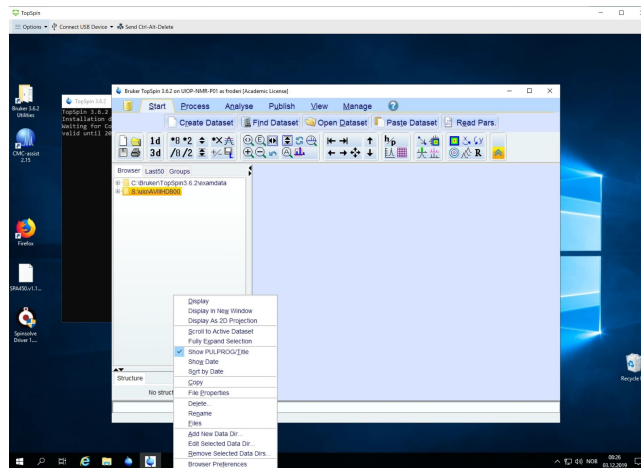
When the program starts you will see too few icons in the top lines of the program and they are in a new format. Your task is to add a second line of icons and make them look like old style buttons



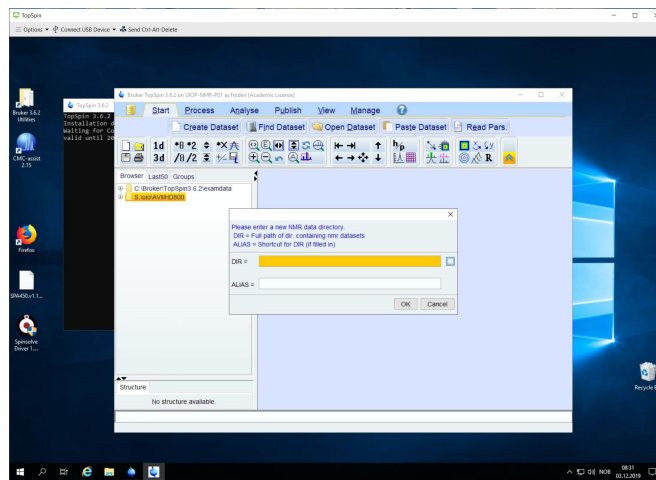
Click with right mouse button to the right of the double arrow pointing downwards and select toggle icon style with the left mouse button.



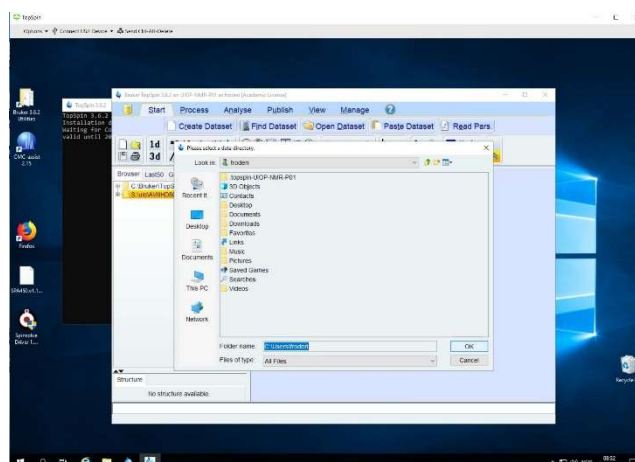
Then you have buttons you might recognize, but still too few of them



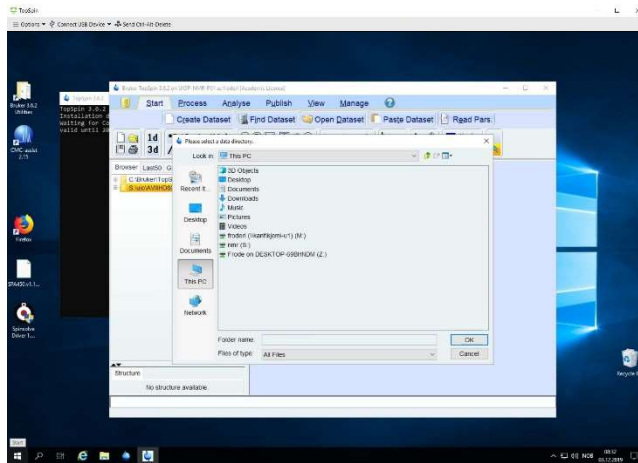
Locate a small blue square to the right of the yellow DIR= line. Click on it.



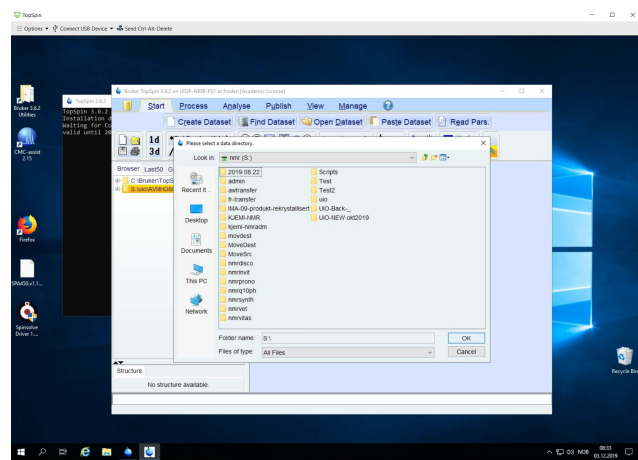
A new window pops up. Locate This PC and click on it.



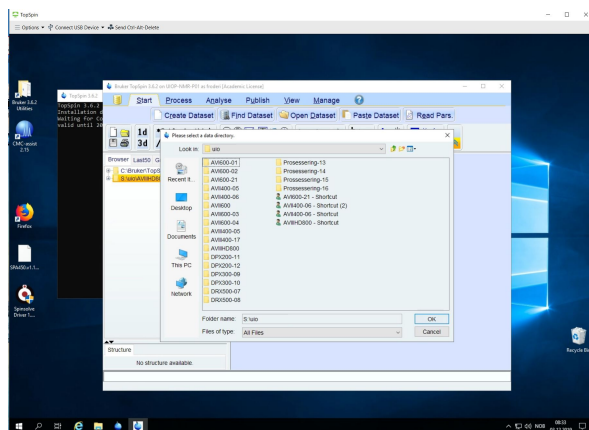
Then nmr(S) appear among many other locations. Click on S



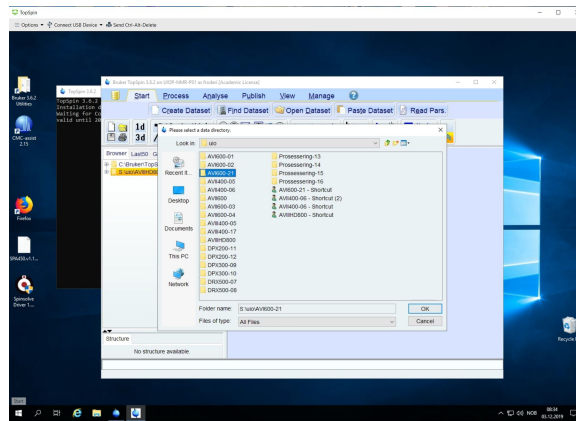
Click on uio



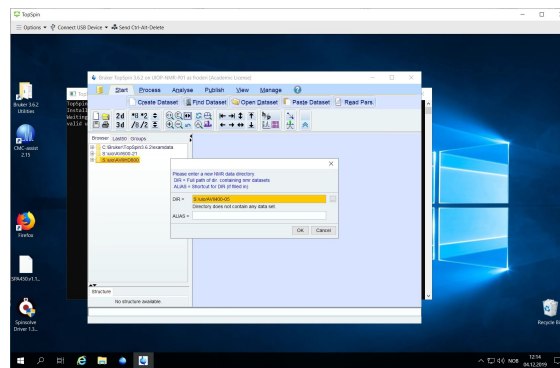
Now familiar data locations do appear



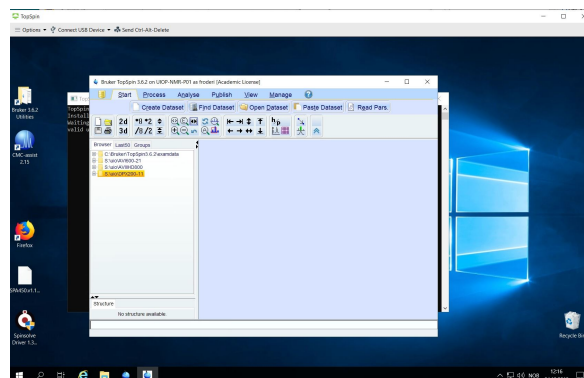
Click on the one you want to add to the left pan in TopSpin



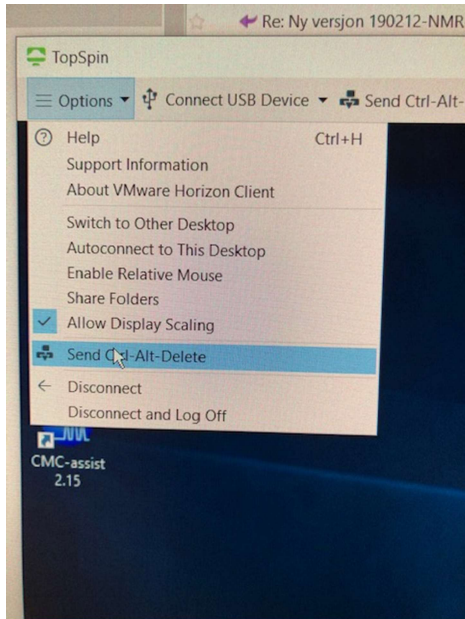
It appears in the yellow line. Click on OK.



The new directory appears in TopSpin.



Open your data as you have learned elsewhere. Have fun.



Select Sign Out and you come back to your own desktop.

