



UiO • Det matematisk-naturvitenskapelige fakultet

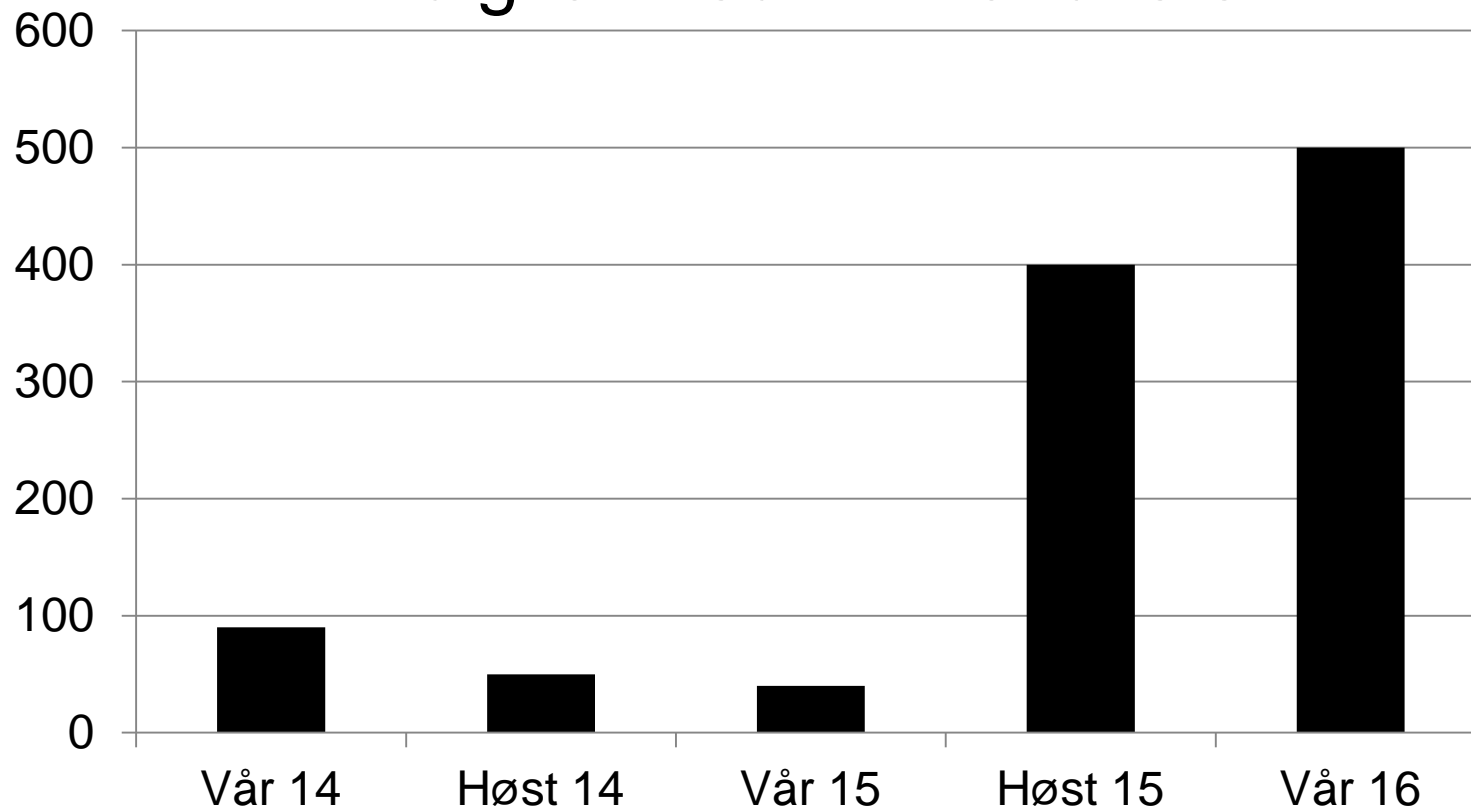
Digital eksamen ved MN-fakultet H16 →



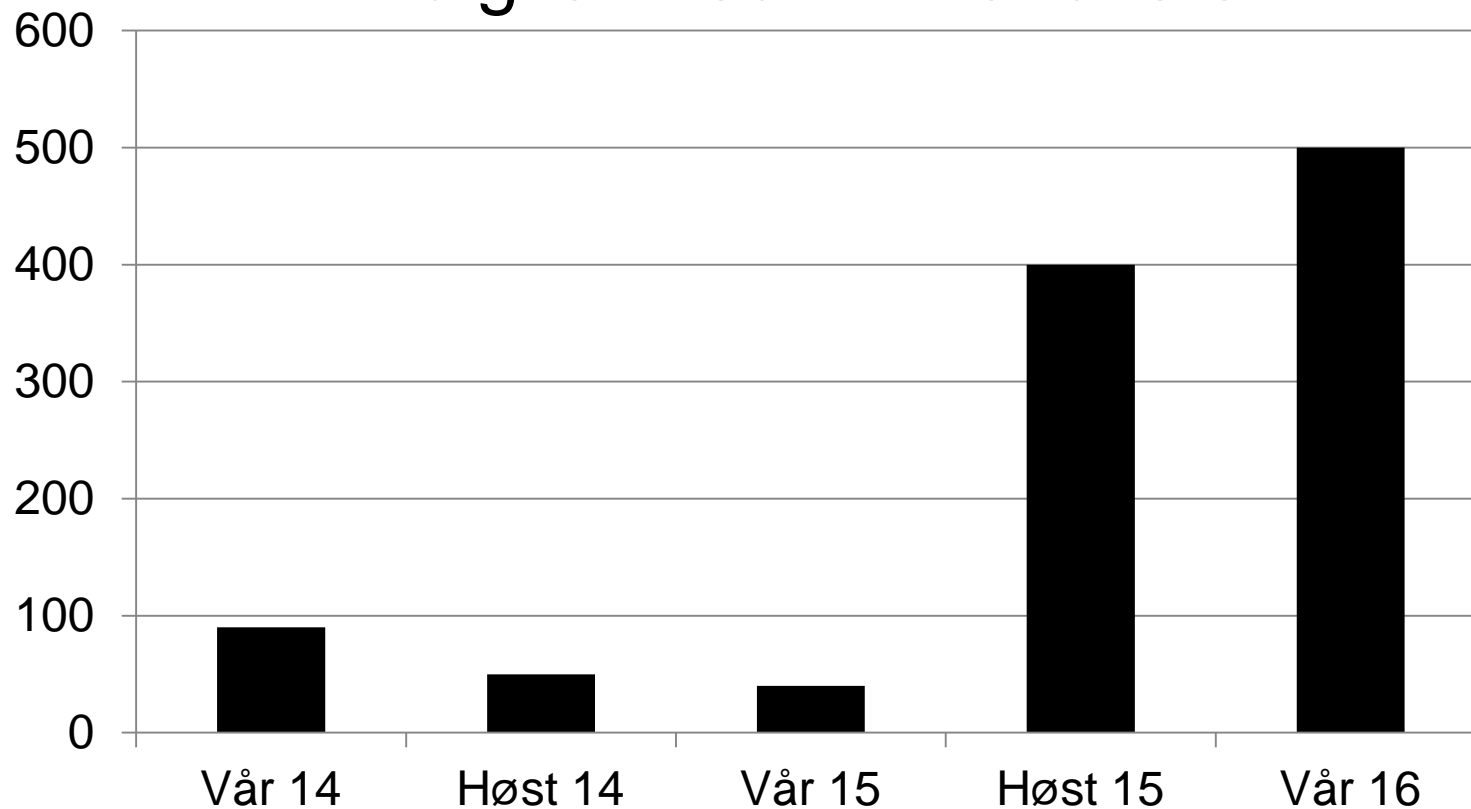
Pilotemner digital eksamen MN V16

KJM3900	8. juni	30
KJM3700	13. juni, 14.30	25
ITLED4041	20. april	20
INF2270	1. juni	120
INF3510	8. juni	130
FRM1040	14. april	70
FRM5820	4. mai	10
FRM9820	4. mai	2

Antall kandidater eksaminert digitalt ved MN-fakultetet

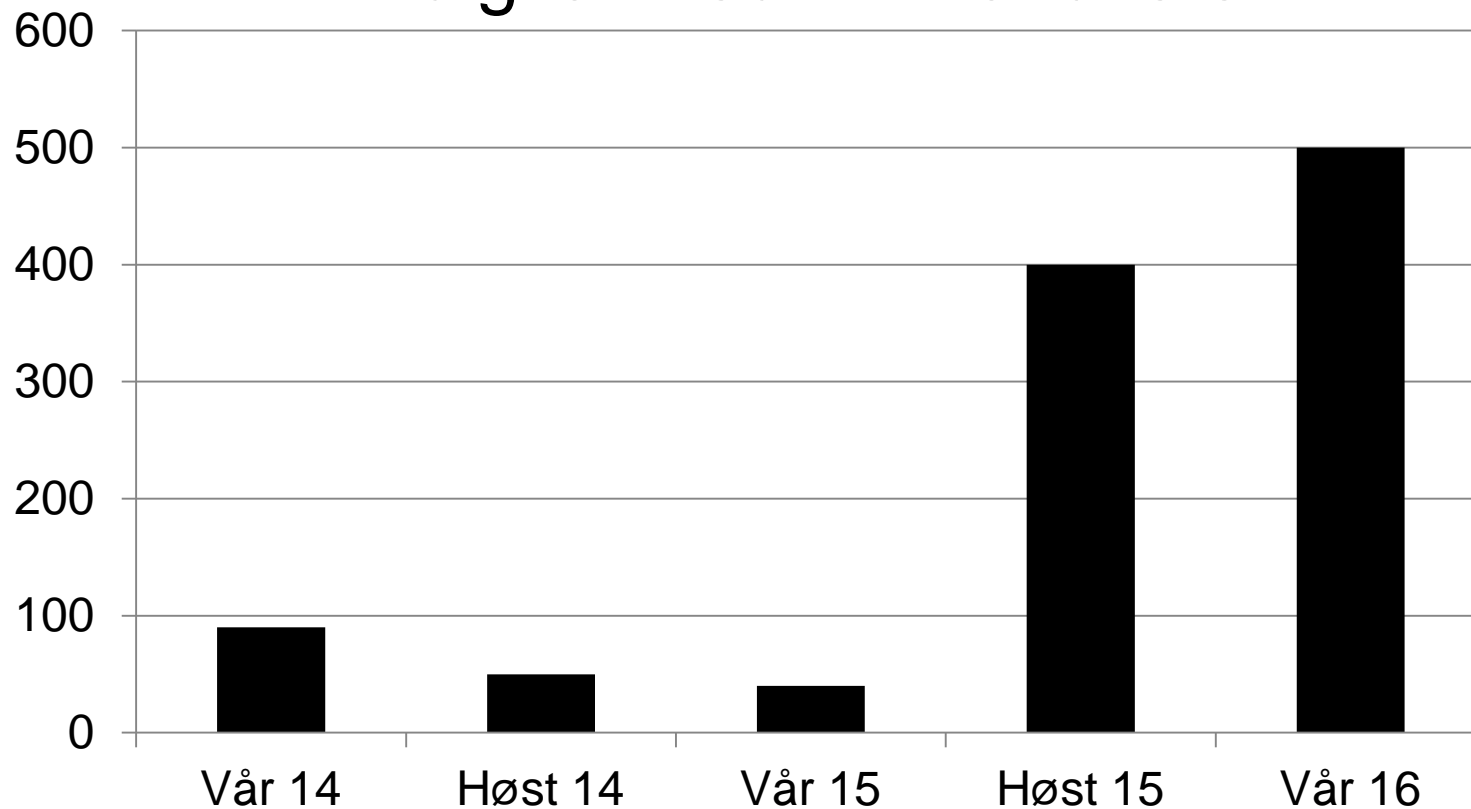


Antall kandidater eksaminert digitalt ved MN-fakultetet



Prosjekt UiO digital eksamen

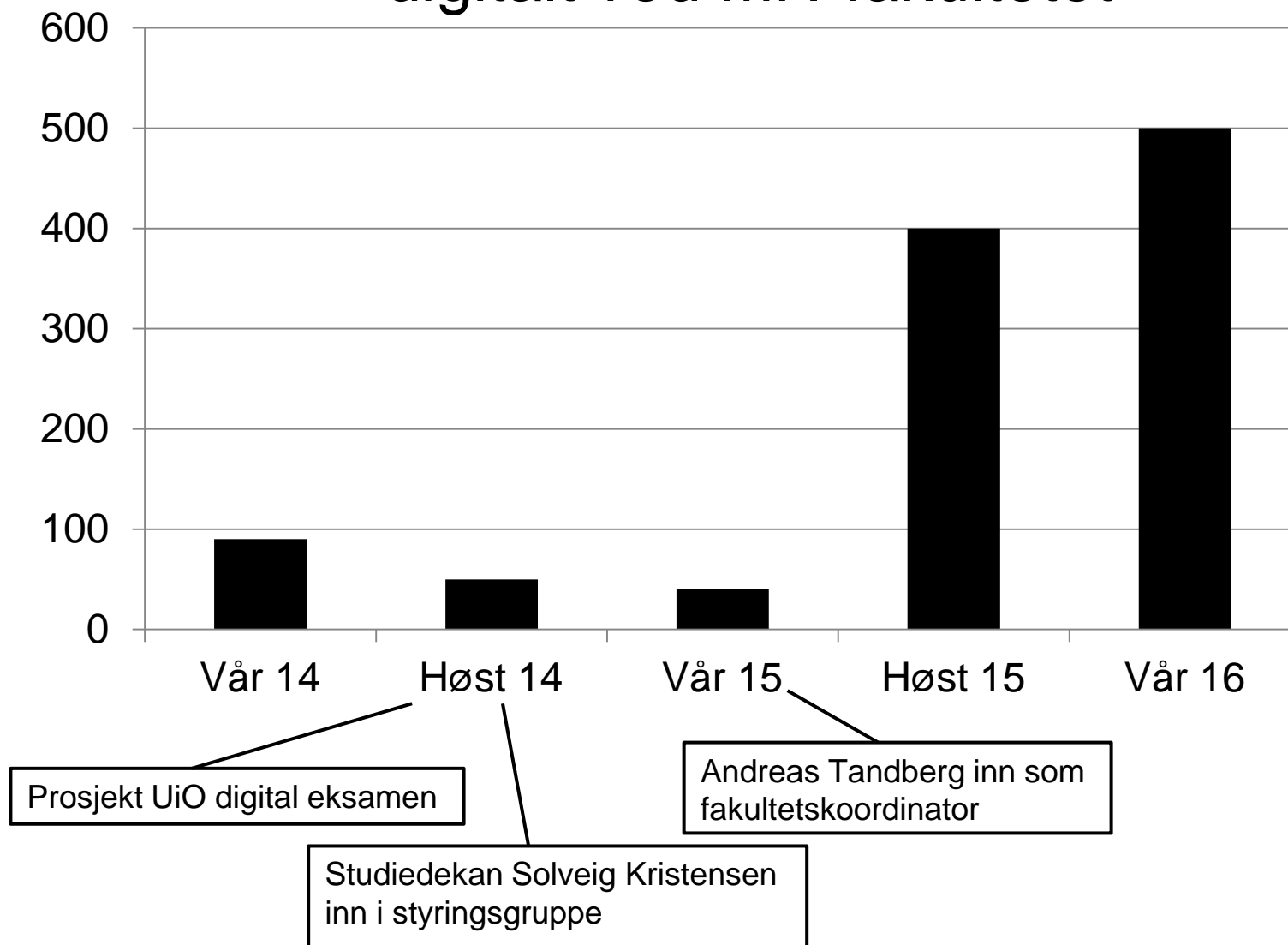
Antall kandidater eksaminert digitalt ved MN-fakultetet



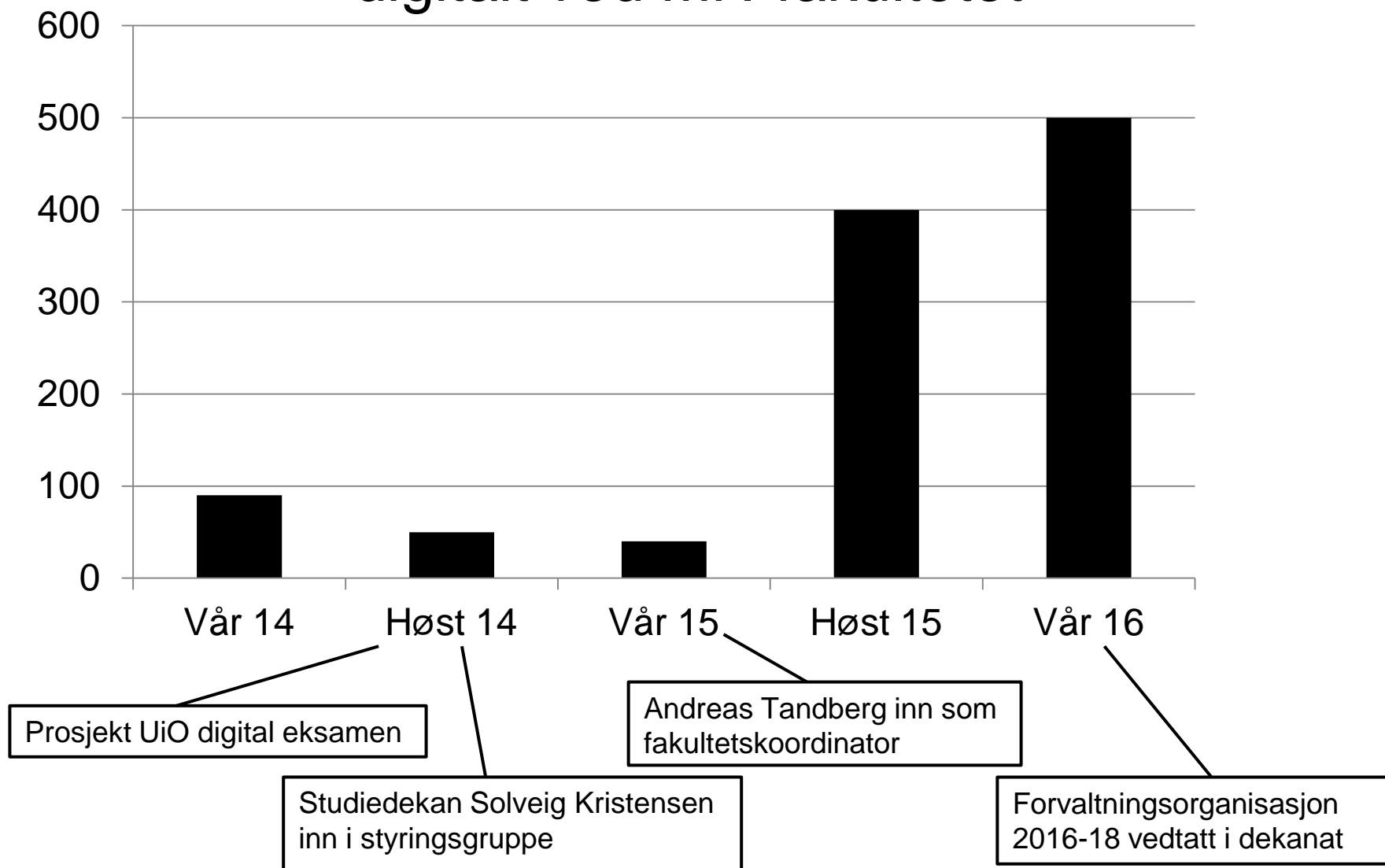
Prosjekt UiO digital eksamen

Studiedekan Solveig Kristensen
inn i styringsgruppe

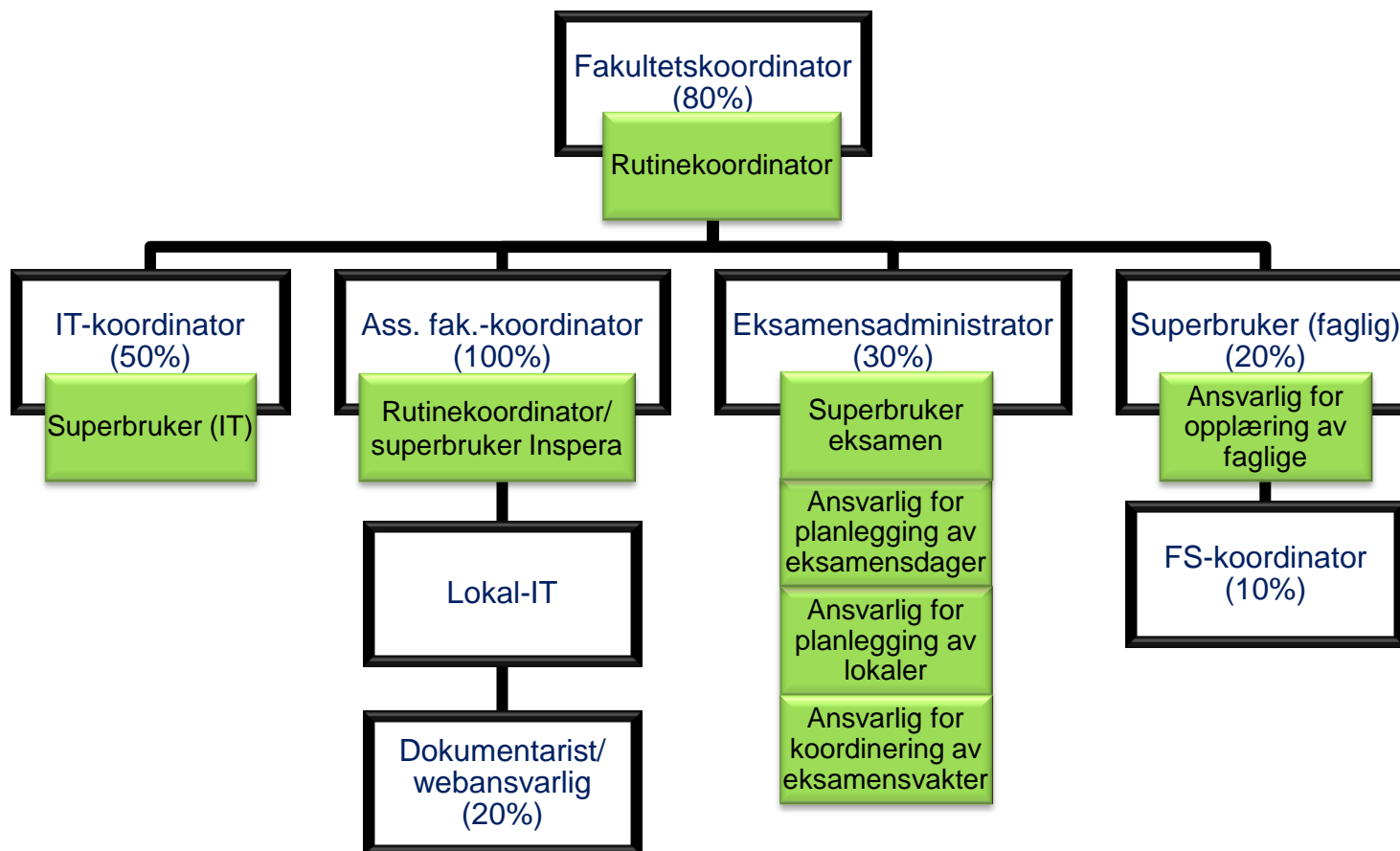
Antall kandidater eksaminert digitalt ved MN-fakultetet



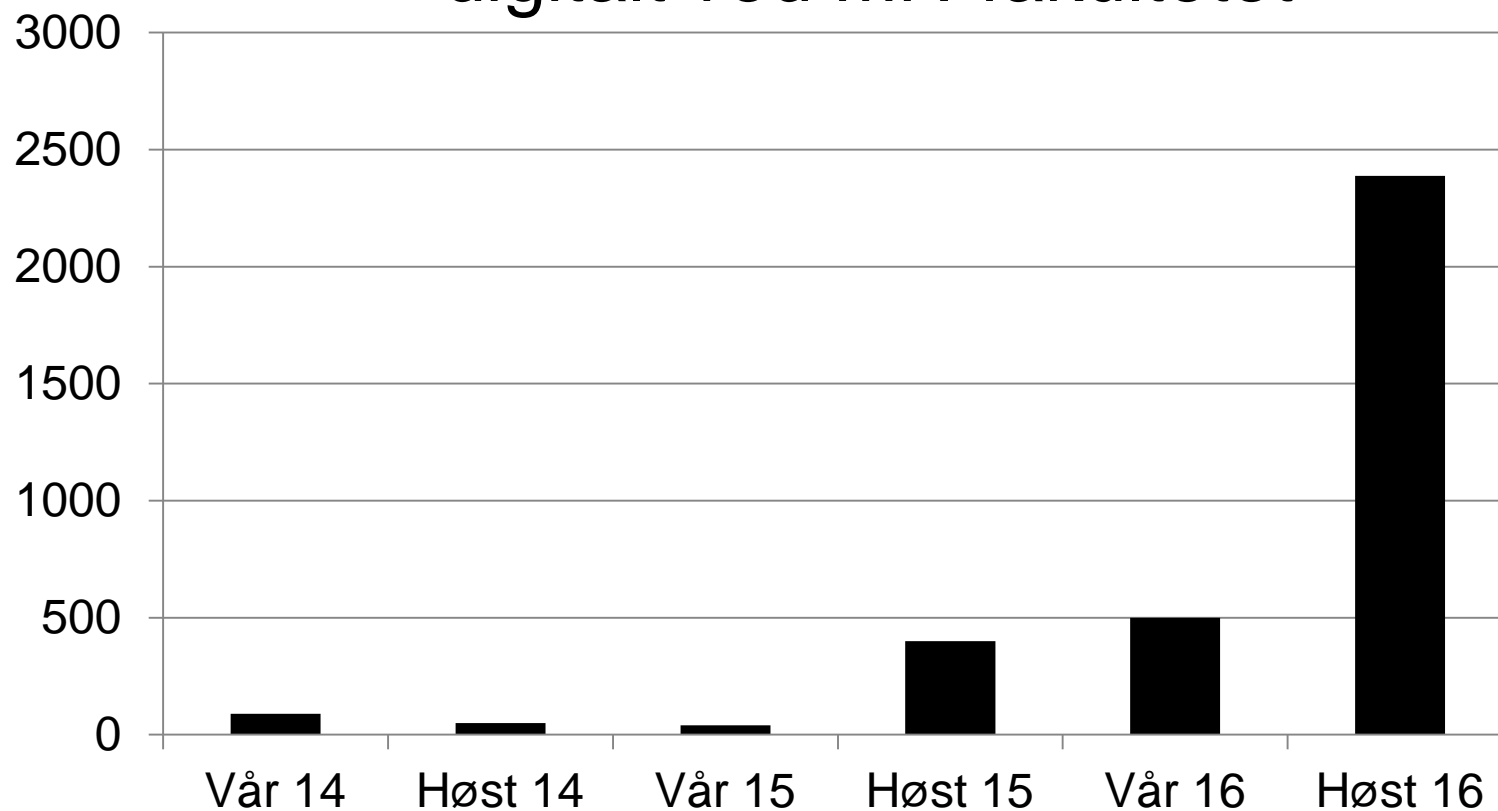
Antall kandidater eksaminert digitalt ved MN-fakultetet



Forvaltningsorganisasjon for digital eksamen, MN



Antall kandidater eksaminert digitalt ved MN-fakultetet



H16:

**25 % av skoleeksamen-kandidatene
ved MN eksamineres digitalt**

Silurveien 2



Emnepakke H16:

Institutt	Ca. antall kandidater	Kommentar
IFI		
INF1080	265	
INF1100	316	
INF5181	51	
INF1060	194	
INF1500	140	
INF5150	35	
ITLED4041	20	
ENT4050(?)	25	
INF1000	488	
KJM		
KJM1100	224	
KJM1001	230	
	280	<i>Midtveis</i>
FRM		
FRM2010	60	
FRM3010	60	
	2388	

Krevende å digitalisere realfag

4.4.2c Set $\alpha = -\beta T_0 \rightarrow u_{tt} = c^2 u_{xx} - \beta c^2 u$ ($c^2 = T_0 / \rho_0$).

with BC: $u(0,t) = 0, u(L,t) = 0$

IC: $u(x,0) = 0, u_t(x,0) = f(x)$

sep. of var.: $u(x,t) = h(t)\phi(x) \Rightarrow h''\phi = c^2 h\phi'' - c^2\beta h\phi$

$\Rightarrow \frac{1}{c^2} \frac{h''}{h} = \frac{\phi''}{\phi} - \beta \stackrel{!}{=} -\lambda \Rightarrow h'' + c^2\lambda h = 0$

and $\phi'' + (\lambda - \beta)\phi = 0$ with $\phi(0) = \phi(L) = 0$

Sol. to ϕ -problem is already known from Ch. 2:

$\lambda - \beta = \frac{n^2\pi^2}{L^2} \Rightarrow \lambda \equiv \lambda_n = \beta + \frac{n^2\pi^2}{L^2}$ and $\phi(x) \equiv \phi_n(x) = \sin \frac{n\pi x}{L}$

Sol.: to h -problem: $h'' + \omega_n^2 h = 0$ where

$\omega_n = c\sqrt{\lambda_n} = c\sqrt{n^2\pi^2/L^2 + \beta} \equiv$ frequencies of vibration
($n=1,2,1,\dots$)

This is the harm. oscill. equ. $\Rightarrow h(t) \equiv h_n(t) = A_n \cos \omega_n t + B_n \sin \omega_n t$.

superposition: $u(x,t) = \sum_{n=1}^{\infty} (A_n \cos \omega_n t + B_n \sin \omega_n t) \sin \frac{n\pi x}{L}$

Invoke IC: $u(x,0) = \sum_{n=1}^{\infty} A_n \sin \frac{n\pi x}{L} = 0 \Rightarrow A_n = 0$

and $u_t(x,0) = \sum_{n=1}^{\infty} B_n \omega_n \sin \frac{n\pi x}{L} \stackrel{!}{=} f(x) \Rightarrow B_n = \frac{2}{L\omega_n} \int_0^L f(x) \sin \frac{n\pi x}{L} dx$

Oppgaver Prøver Monitor Vurdering Rapporter

Bokmål ⚙

Ny oppgave

Flervalg (ett svar)	Flervalg (flere svar)	Fyll inn tekst	Fyll inn tall	Fyll inn matemati...	Nedtrekk	Langsvar	Filopplast...
Sant/usant	Paring	Sammens...	Programm..	Utregning	Dra og slipp	Feltvalg	Dokument

















Muntlig

Avbryt

Oppgaver Prøver Monitor Vurdering Rapporter

Bokmål

Ny oppgave

 Flervalg (ett svar)	 Flervalg (flere svar)	 Fyll inn tekst	 Fyll inn tall	 Fyll inn matematisk	 Nedtrekk	 Langsvar	 Filopplast...
Sant/usant	Paring	Sammens...	Programm..	Utregning	Dra og slipp	Feltvalg	Dokument
 Muntlig							

Avbryt

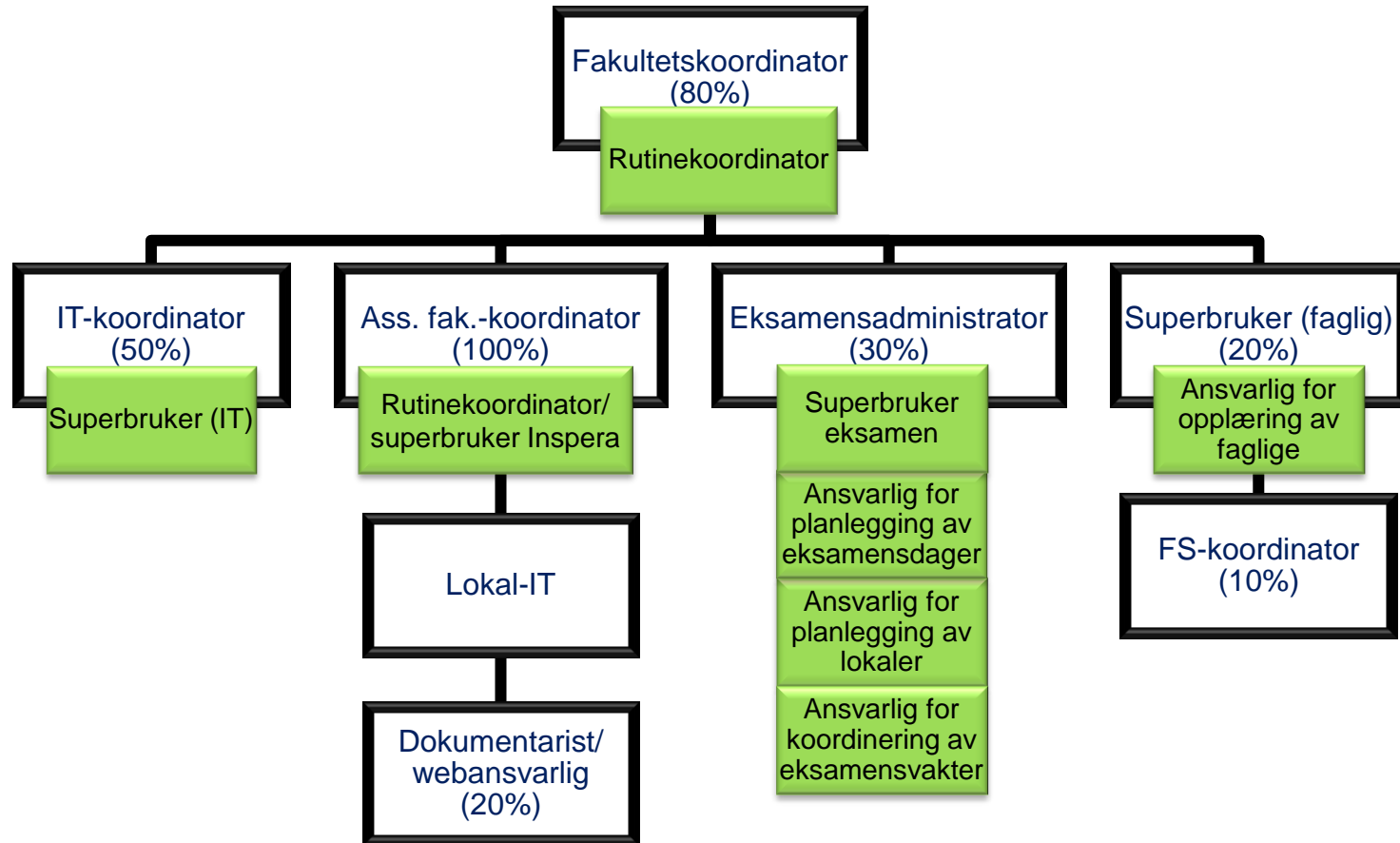
MI er ikke glemt



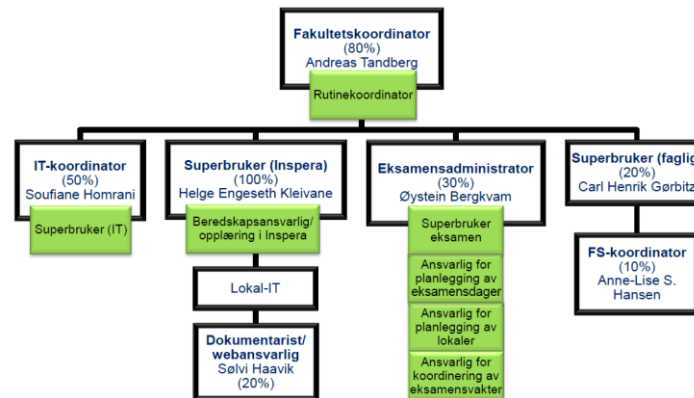
Vår 2017!



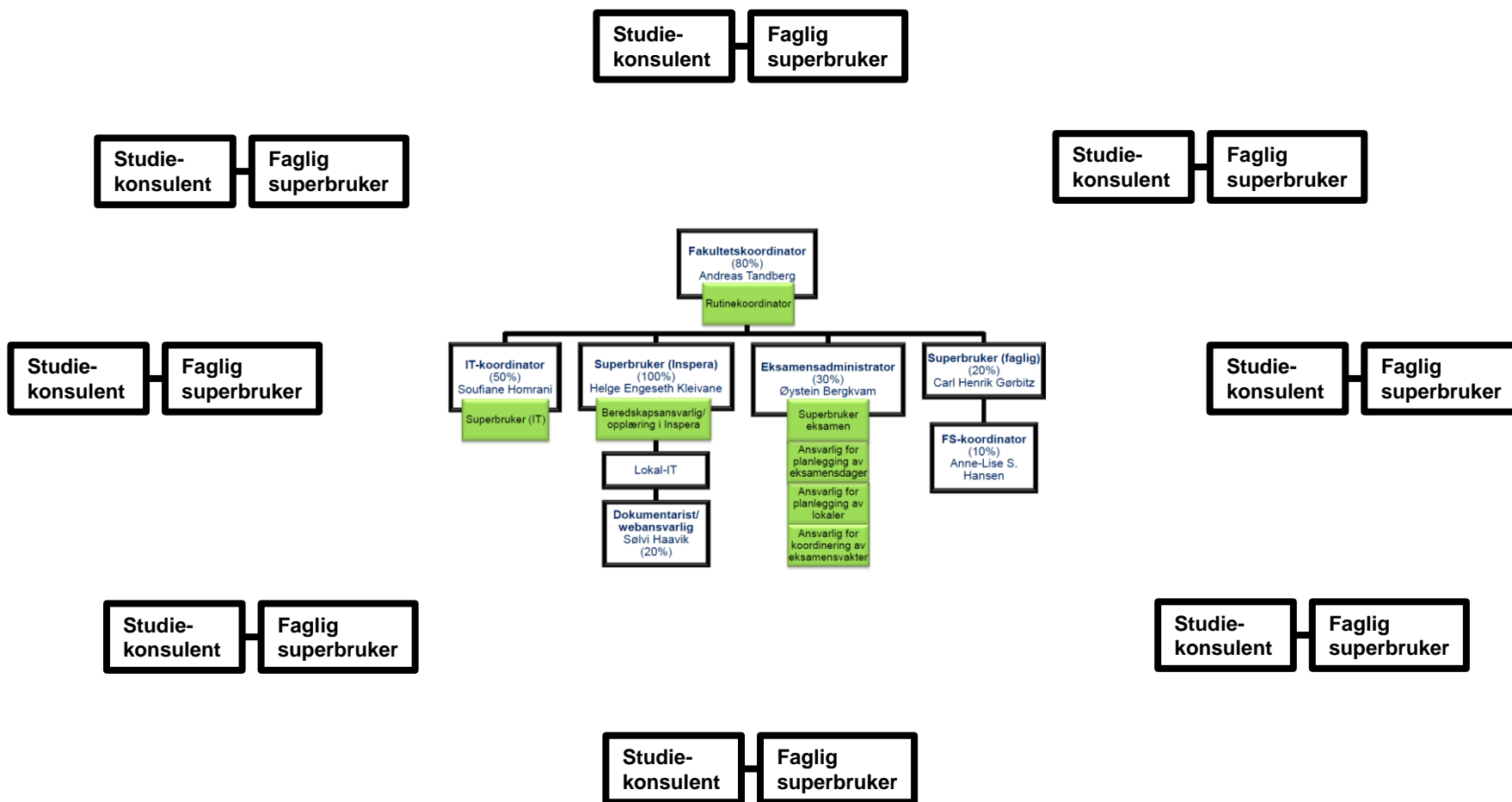
**2388 kandidater og oppover – Hvordan
gjør vi dette?**



Storforvaltningsstruktur



Storforvaltningsstruktur



Oppskaleringsplan

- [Organisasjonskart](#)
- Rutineplan ([fakultets-](#) og [instituttnivå](#))
- [Kommunikasjonsplan](#)
- [ROS](#)
- [Beredskapsplan](#)
- [Uttømmende veiledninger](#)
- Workshops/seminar

Muligheter 2017



Virtuell maskin: VMware Horizon

